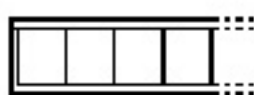
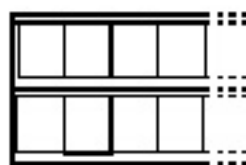


# Building Your Illuminator To Your Requirements...

## How Many Tiers and Sections?



One tier: 1, 2, 3, 4...sections



2 Tier: 1/1, 2/2...sections

The most popular sizes are 2 sections, 4 sections, 4/4 sections.

## Surface or Recess Mounted?



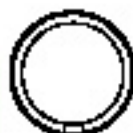
Surface mounting on wall



Recess mounting in wall

Surface costs less to install. Recess is unobtrusive, contributes to a clean, uncluttered appearance.

## How Many Bulbs Per Section?



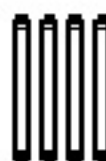
1 Circline bulb



2 Straight bulbs



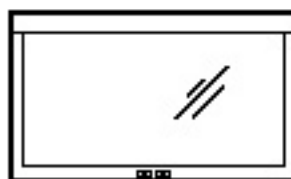
3 Straight bulbs



4 Straight bulbs

4 Bulbs has the most even illumination, is the most popular, and meets ACR standards.

## Painted or Stainless Trim?



Painted trim



Stainless steel trim

SS costs more but is attractive & won't scratch or chip. Painted blends into walls well.

## Regular or Thinline Thickness?



Regular thickness 4 3/4"



Thinline thickness 3 3/4"

Regular has more even illumination and runs cooler. Thinline takes up less space.

## Any Options?

- CD-6: Cord and plug (surface mounted units only)
- MSW-1: Film activation (section illuminates when film is inserted)
- ELD-15: Electronic dimmers (dims all bulbs simultaneously)
- CSW-X: Master switches (turns on or off all sections on a tier)
- A20-1: Tilted lower tiers (20 degree tilt is standard)
- LLB-1: Low leakage ballasts (required in all surgery rooms)

Most popular: Cords, Film activation, Master switches.